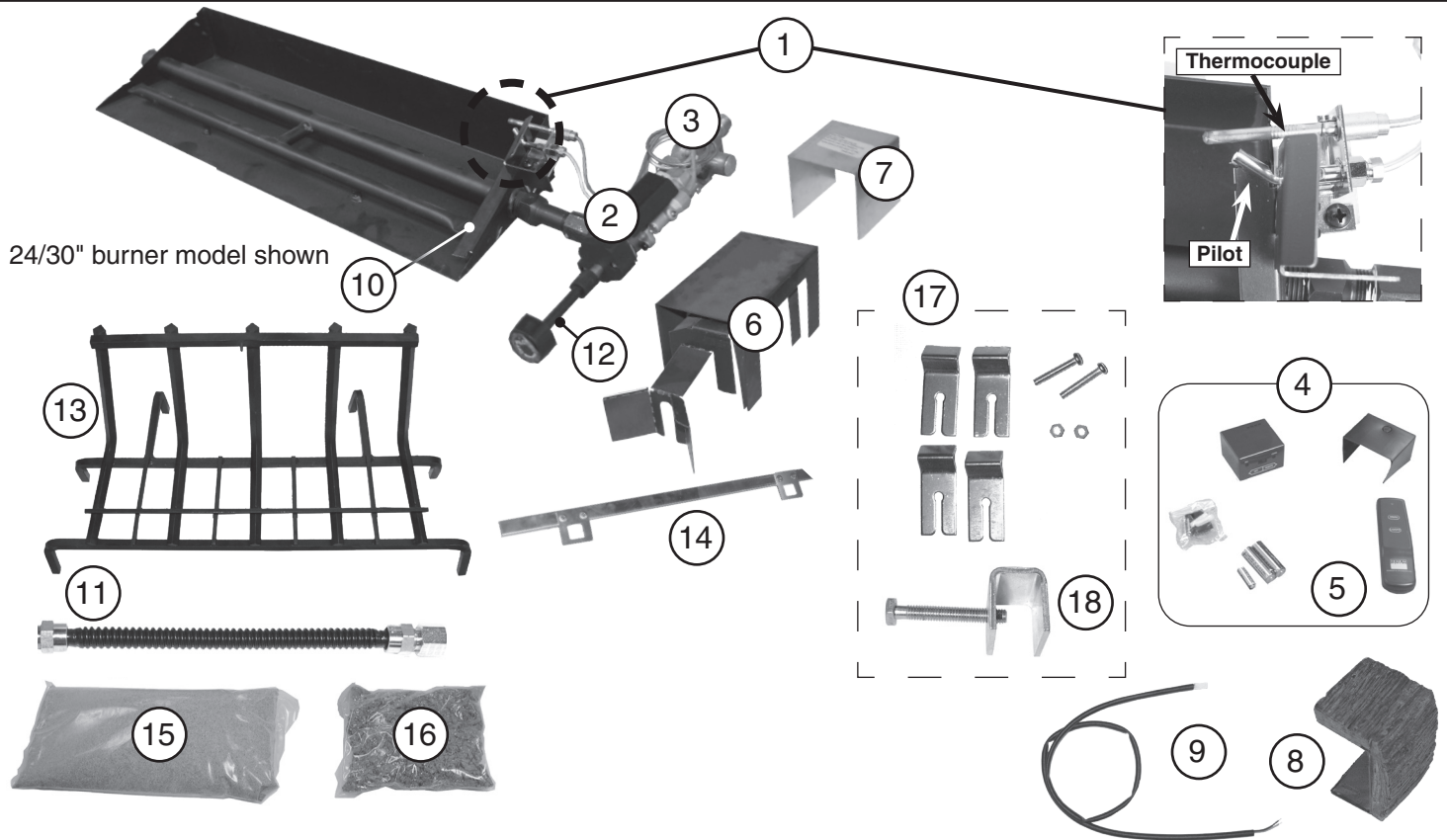


GR47 BURNER PARTS LIST - 17 SERIES



24/30" burner model shown

Note: Photos not to scale
Replacement parts can be ordered from your local Real Fyre dealer.

The log set is purchased and packaged separately; contact your local Real Fyre dealer when ordering. Refer to the instructions included with the log set.

Item	Description	18/20" model		24/30" model	
		Part No.	Qty.	Part No.	Qty.
1.	Pilot assembly (natural) or Pilot assembly (propane)	PAC-1NAT PAC-1LP	1 1	PAC-1NAT PAC-1LP	1 1
2.	Control valve (natural or propane)	SV-37	1	SV-37	1
3.	Pressure regulator (natural) Pressure regulator (propane)	PR-3NAT PR-2LP	1 1	PR-3NAT PR-2LP	1 1
4.	Remote kit * † (includes receiver, transmitter, batteries, plastic cover)	VR-1A	1	VR-1A	1
5.	Remote transmitter (only) *	AT-V1-1	1	AT-V1-1	1
6.	Valve heat shield	HS-51	1	HS-51	1
7.	Regulator heat shield	HS-39	1	HS-39	1
8.	Decorative heat shield * †	HS-53	1	HS-53	1
9.	Remote receiver wire harness * †	WH-01	1	WH-01	1
10.	Flame diverter bracket	SH-1	1	SH-1	1
11.	Flex connector (w/ adapter), 1/2" O.D. x 12"	CK-5-SP	1	CK-5-SP	1
12.	Control knob w/ extension	EH-11H	1	EH-11H	1
13.	Grate	SD-RUM-18/20	1	SD-RUM-24/30	1
14.	Wire guard	WHG-1	1	WHG-2	1
15.	Sand (natural gas) or Vermiculite (propane gas)	CS-8 LF-15-3.5	1 1	CS-10 LF-15-7	1 1
16.	Black embers	EB-1	1	EB-1	1
17.	Hardware kit (damper clamp, stabilizer clips w/ screws and nuts)	HK-1	1	HK-1	1
18.	Damper clamp (only)	DC-1	1	DC-1	1

* if equipped

† to add a remote system to a 17M model, use VR-1A, HS-53, and WH-01